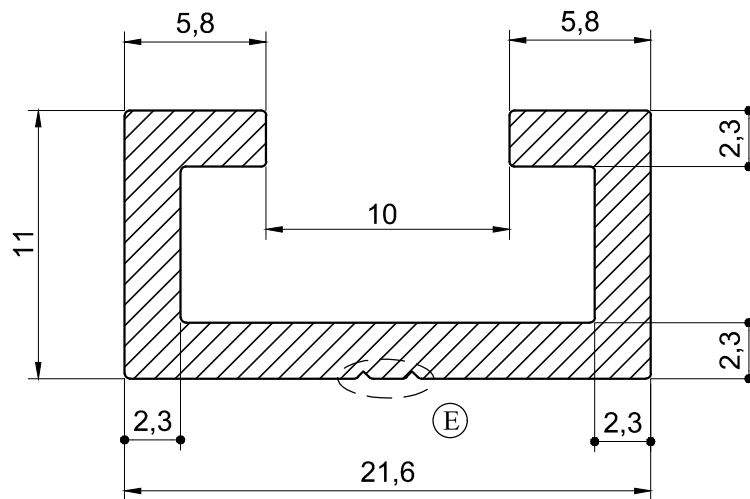


Scale 1:1



Important Notes for new tool order:

- 1) Different wallthickness and connection zones in the profile may cause the formation of 'CHILL and SHIRINK' mark.
- 2) If there are 'FUNCTIONAL PARTS' working with the profile, their dimensions and working scheme should be specified.
- 3) The raw material 'ALLOY' of the requested profile must be specified.
- 4) If the profile has not any visible surface, it should be stated on the drawing as 'NO VISIBLE SURFACE'
- 5) The visible surface must be specified on the drawing.

Mill Finish	<input type="checkbox"/>
Coating	<input type="checkbox"/>
Anodized	<input type="checkbox"/>

undefined radius: 0.20 mm **VISIBLE SURFACE**

Rev.0	19.04.2022
Rev.1	
Rev.2	
Rev.3	
Rev.4	
Rev.5	

PLEASE NOT THAT ALL DRAWING TO BE ORDERED FOR DIE PRODUCTION WILL NOT BE ACTIVATED UNLESS VISIBLE SURFACE INDICATION EXISTS ON APPROVED DRAWINGS. PLEASE TAKE CARE TO INCICATE VISIBLE SURFACES ON THE DRAWINGS. EAS WILL NOT TAKE ANY RESPONSABILITY OF THE CLAIMS RELATED TO THE SURFACE DEFECTS, IN CASE NO SUCH INDICATION EXISTS ON THE DRAWINGS.

