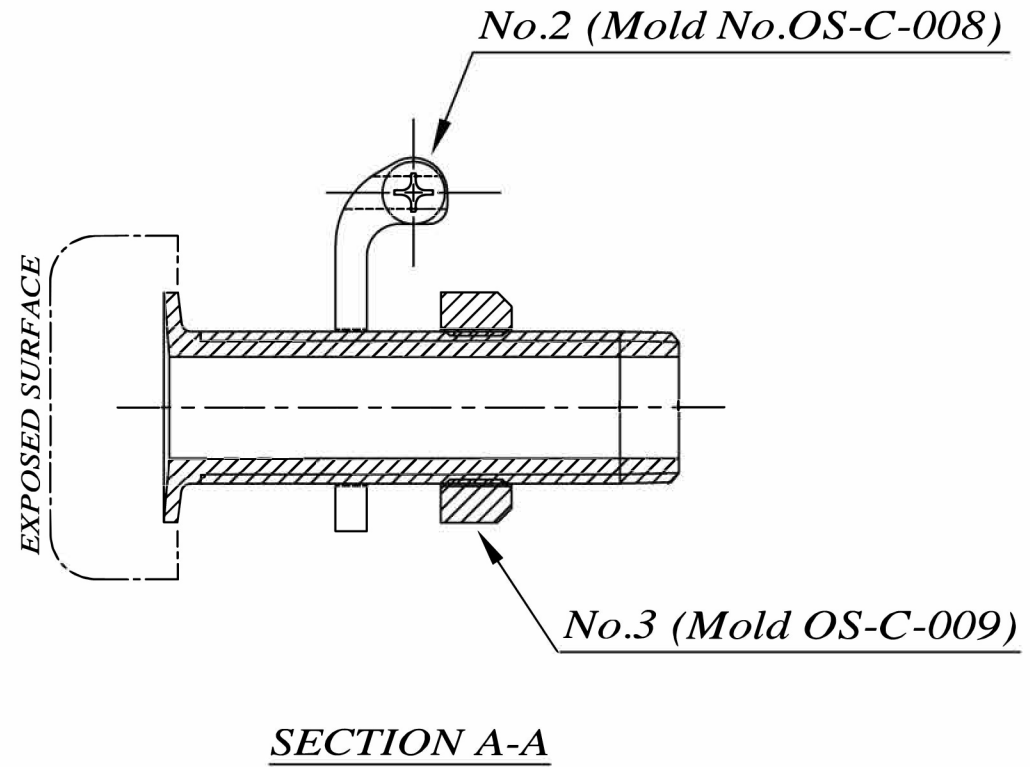
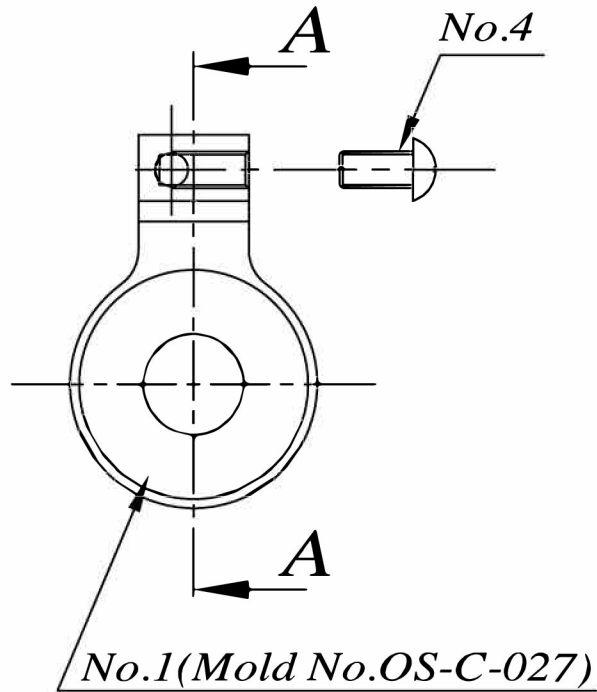


| | | | | | |
|--------------------|--|----------------------|----------|----------|--------|
| | | SCREW M4x0.7 10.5L | | | |
| DATE : 24 NOV 2001 | | CUSTOMER : | | | |
| CHECKED BY : | | | | | |
| DATE : | | | | | |
| APPROVED BY : | | REVISION | MOLD No. | MATERIAL | WEIGHT |
| DATE : | | A.1 | | 304 | |
| SCALE : N.T.S. | | DWG. No. : A40086810 | | | SHEET |
| | | | | | 1 : 1 |

| TOLERANCE | |
|---|--------------|
| <input checked="" type="checkbox"/> 0.X | ± 0.25 |
| <input checked="" type="checkbox"/> 0.XX | ± 0.13 |
| <input checked="" type="checkbox"/> 0.XXX | ± 0.05 |
| <input checked="" type="checkbox"/> ANGULAR | $\pm 0'30''$ |

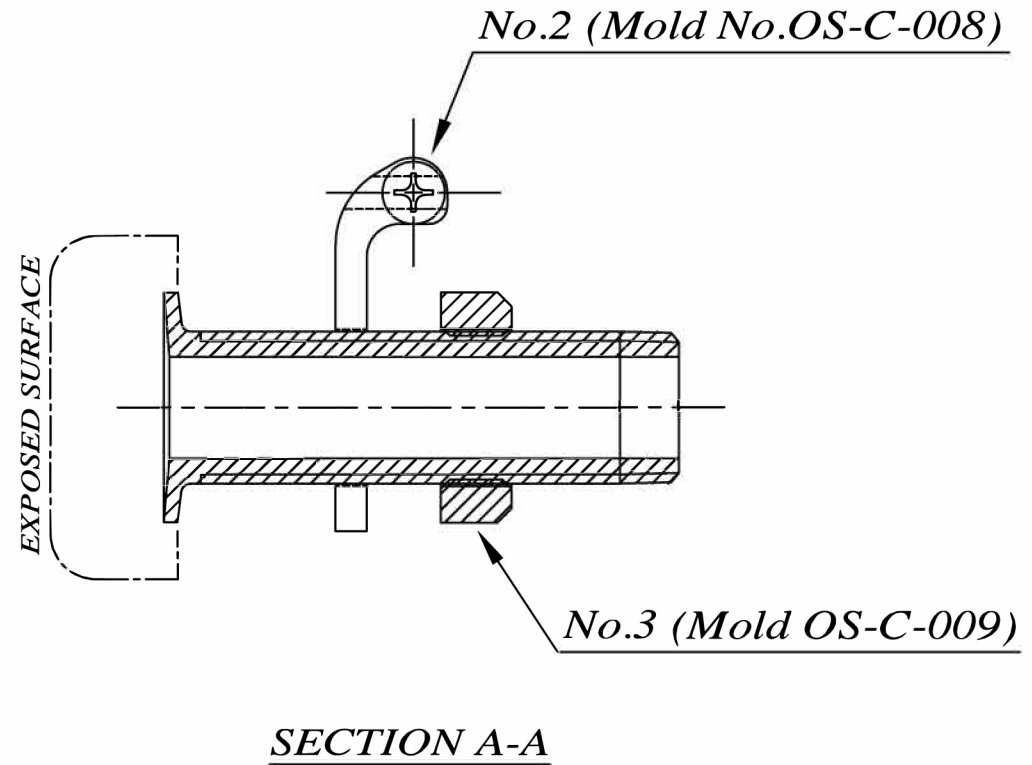
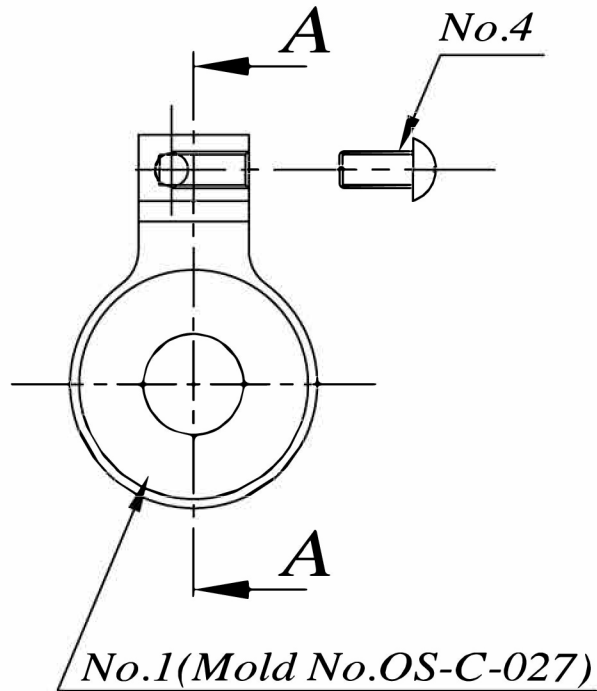


NOTE :

1. BREAK ALL SHARP EDGES
2. VIBRATION STEEL BALL
3. POLISH ON EXPOSED SURFACE

| No. | DWG. No. | TITLE | MATERIAL | QUANTITY |
|-----|------------|----------------------------|----------|----------|
| 1 | 9306510-01 | BODY THRU-HULL 3/8"-19 BSP | 316 | 1 |
| 2 | 9306180-02 | 3/8"-19 GROUND LUG | 316 | 1 |
| 3 | 9306180-03 | NUT 3/8"-19 BSP | 316 | 1 |
| 4 | A40086810 | SCREW (M4x0.7P) | 304 | 1 |

| TOLERANCE | DATE : 24 JAN 2012 | FLUSH THROUGH HULL MIRROR 3/8"-19BSP | | |
|-----------------|--------------------|--------------------------------------|----------|--------------------|
| ☒ 0~10 ± 0.14 | CHECKED BY : | CUSTOMER : | | |
| ☒ 11~30 ± 0.20 | DATE : | OSCULATI | | |
| ☒ 31~80 ± 0.37 | APPROVED BY : | REVISION | MOLD No. | MATERIAL |
| ☒ 81~120 ± 0.44 | DATE : | B.0 | | |
| ☒ 120 UP ± 0.65 | SCALE : N.T.S. | DWG. No. : 9306510 | | REF. No. : 1752500 |
| ☒ ANGULAR ± 1' | | | | |

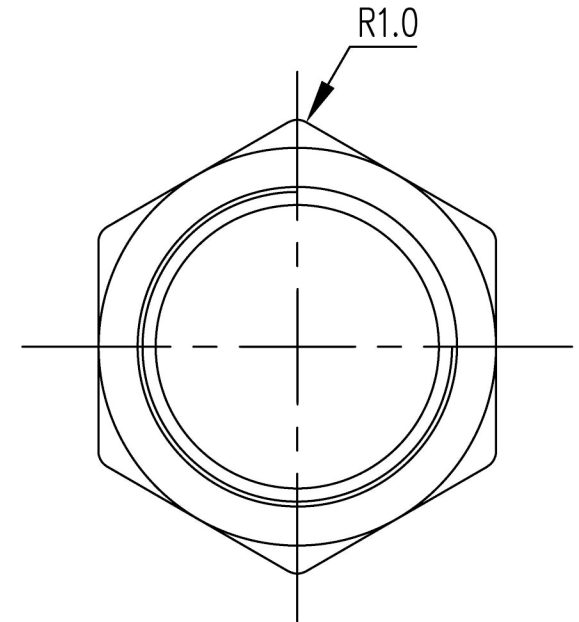
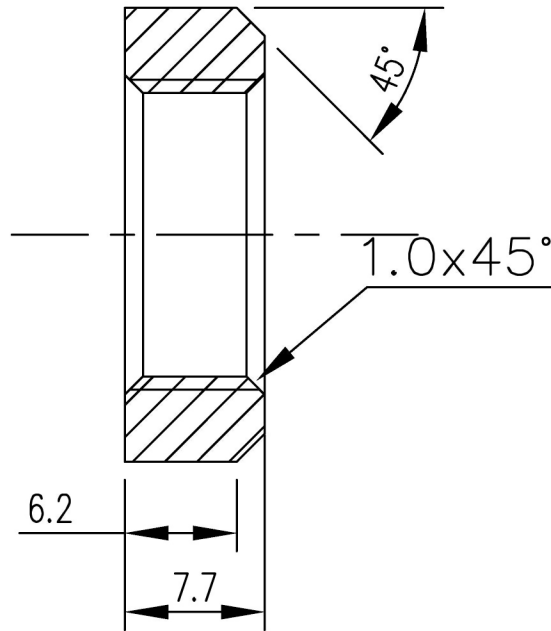
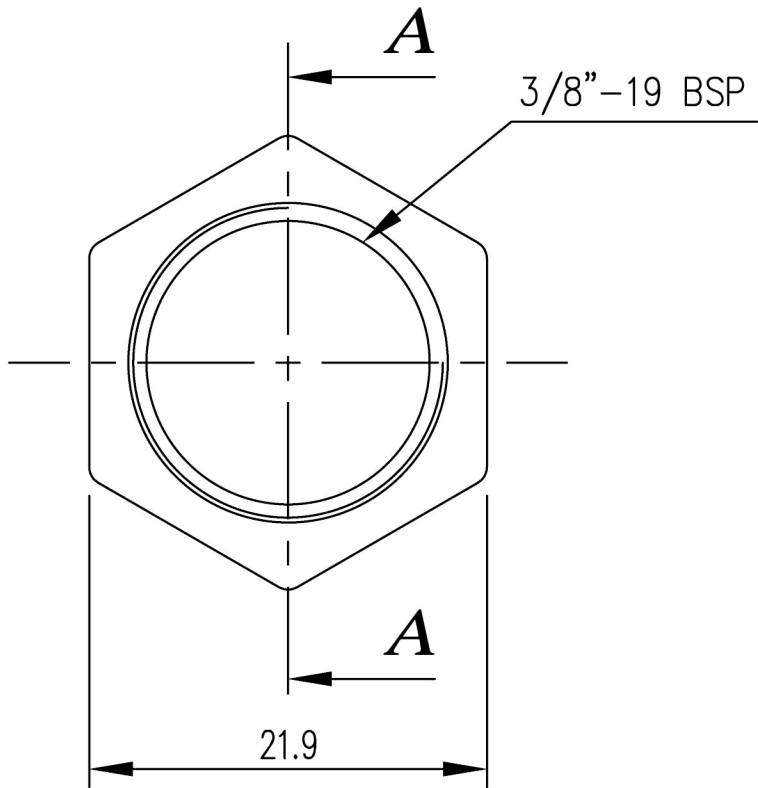


NOTE :

1. BREAK ALL SHARP EDGES
2. VIBRATION STEEL BALL
3. POLISH ON EXPOSED SURFACE

| No. | DWG. No. | TITLE | MATERIAL | QUANTITY |
|-----|------------|----------------------------|----------|----------|
| 1 | 9306510-01 | BODY THRU-HULL 3/8"-19 BSP | 316 | 1 |
| 2 | 9306180-02 | 3/8"-19 GROUND LUG | 316 | 1 |
| 3 | 9306180-03 | NUT 3/8"-19 BSP | 316 | 1 |
| 4 | A40086810 | SCREW (M4x0.7P) | 304 | 1 |

| TOLERANCE | DATE : 24 JAN 2012 | FLUSH THROUGH HULL MIRROR 3/8"-19BSP | | |
|-----------------|--------------------|--------------------------------------|----------|--------------------|
| ☒ 0~10 ± 0.14 | CHECKED BY : | CUSTOMER : | | |
| ☒ 11~30 ± 0.20 | DATE : | OSCULATI | | |
| ☒ 31~80 ± 0.37 | APPROVED BY : | REVISION | MOLD No. | MATERIAL |
| ☒ 81~120 ± 0.44 | DATE : | B.0 | | |
| ☒ 120 UP ± 0.65 | SCALE : N.T.S. | DWG. No. : 9306510 | | REF. No. : 1752500 |
| ☒ ANGULAR ± 1' | | | | |

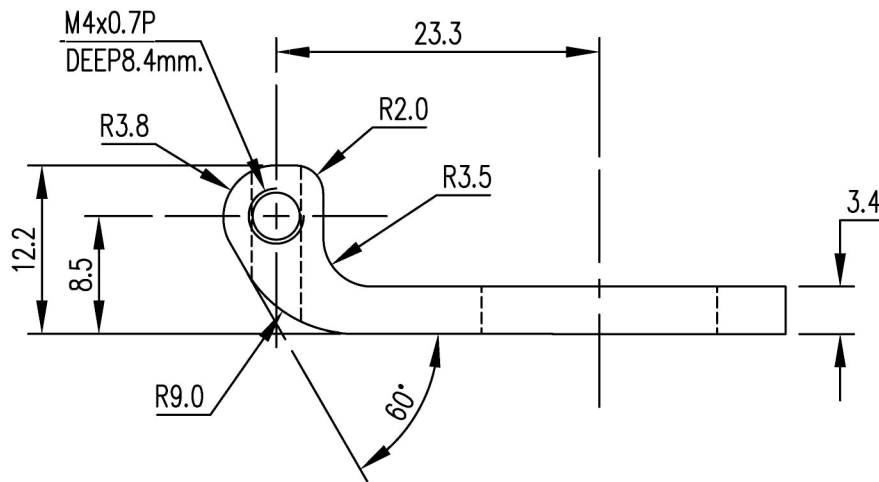
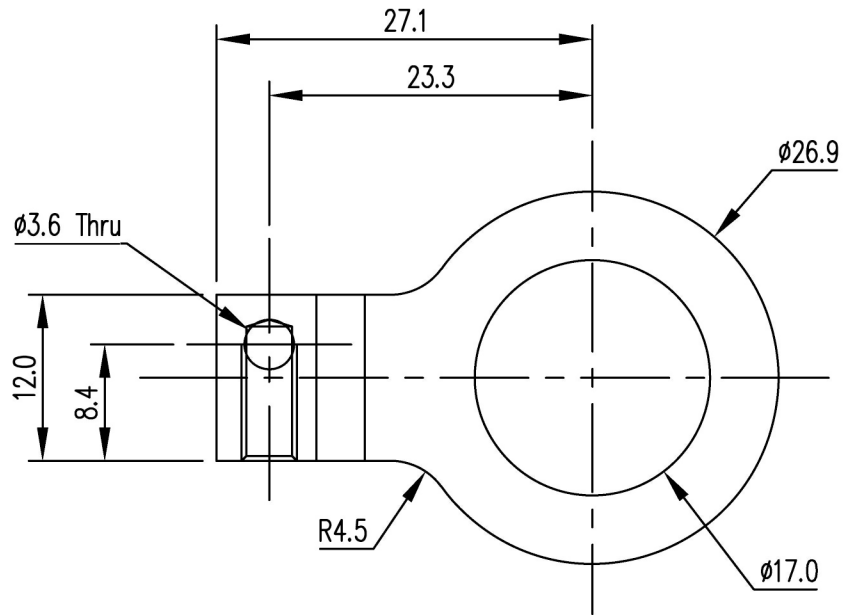


SECTION A-A

NOTE :

1. BREAK ALL SHARP EDGES.
2. VIBRATION STEEL BALL.

| | | | | |
|---|-------------------|--|--|--|
| | | | | |
| | | NUT (3/8"–19 BSP) | | |
| DATE : 24 JAN 2012 | | OSCULATI | | |
| TOLERANCE | CHECKED BY : | CUSTOMER : | | |
| <input checked="" type="checkbox"/> 0 ± | DATE : | REVISION MOLD No. MATERIAL A.1 OS-C-009 316 | | |
| <input checked="" type="checkbox"/> 0.X ± 0.25 | APPROVED BY : | | | |
| <input checked="" type="checkbox"/> 0.XX ± 0.13 | DATE : | DWG. No. : REF. No. : 9306180-03 | | |
| <input checked="" type="checkbox"/> 0.XXX ± 0.05 | SCALE : N.T.S. | | | |
| <input checked="" type="checkbox"/> ANGULAR ± 0°30' | | | | |



NOTE :

1. BREAK ALL SHARP EDGES.
2. VIBRATION STEEL BALL.

| | | | | |
|--------------------|--|---------------------------|----------------------|-----------------|
| | | 3/8"-19 GROUND LUG | | |
| DATE : 24 JAN 2012 | | OSCULATI | | |
| CHECKED BY : | | CUSTOMER : | | |
| DATE : | | REVISION | | |
| APPROVED BY : | | A.1 | MOLD No. OS-C-008 | MATERIAL 316 |
| DATE : | | DWG. No. : 9306180-02 | | REF. No. : |
| SCALE : N.T.S. | | | | |

| | |
|-------------------|----------------|
| TOLERANCE | CHECKED BY : |
| ☑ 0 ± | DATE : |
| ☑ 0.X ± 0.25 | APPROVED BY : |
| ☑ 0.XX ± 0.13 | DATE : |
| ☑ 0.XXX ± 0.05 | SCALE : N.T.S. |
| ☑ ANGULAR ± 0°30' | |